

Waiakea High School Kalo Trial



Objectives

- Compare natural farming to traditional and other forms of organic farming.
- Teach students the basic concepts of natural farming (IMO, input spray, and data collection).
- Expand the natural farming practices at Waiakea Agriculture Program.

Ground Prep



IMO Spread and Planting



Watering, end of day 1



Every Friday throughout trial, we spray kalo with IMO2 and FPJ in the afternoon.



We used economical 1-gallon sprayer:

- Water (sitting, not from tap to avoid chlorine, in this trial we used water from their fishponds)

- 2 bottle caps IMO2

- 2 bottle caps FPJ

Chicken and Goat Damage Week 2

Removed livestock and put
down plastic on half the mala.



Week 3: Kalo one week
after being replanted

Week 5: Kalo bouncing back



Week 6



Week 7

Week 9



Week 10



Week 12



Week 13: KNF vs Conventional



Impacts

John's thoughts on the Kalo trail:



"Wow, I didn't expect this to happen, I was sort of a skeptic at the start"

"I would definitely use NF! Seeing these results."

Ag Teacher, Mr. Kobayashi's thoughts on NF:

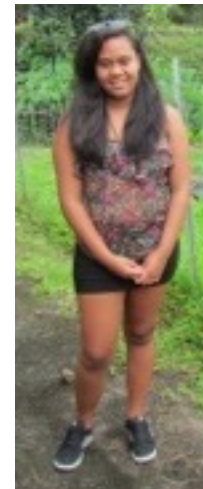


"It's sustainable and readily available. No matter what the outside market does we have NF available to us."

"We're planning on incorporating NF into future programs, next project to tackle is a NF chicken coup."

"It seems more natural and helps the plant more"

-Freshman Kalei Wilson's thoughts on NF vs. conventional practices



Impacts

Waiakea High will be implementing NF into their future Ag curriculum. This demonstration model of NF hosted tours from other schools to increase awareness.

Other programs are inquiring and implementing NF into their programs.



